



WELCOME BOOKLET FOR STUDENTS

FALL 2023



TÉLÉCOM PARIS

Our school is part of **IMT** and founding member of **Institut Polytechnique de Paris**, a world-class science and technology institute uniting five French Grandes Écoles (top-ranking institutions for higher education): École polytechnique, ENSTA Paris, ENSAE Paris, Télécom Paris and Télécom SudParis. HEC is also a privileged partner of IP Paris. This internationally focused institution develops state-of-the-art scientific research, offers excellent training programs awarding all levels of degrees and guarantees excellent employment opportunities for its graduates.



**INSTITUT
POLYTECHNIQUE
DE PARIS**



TABLE OF CONTENTS

04 • PRACTICAL INFORMATION

05 • DEAN OF STUDIES

07 • ENGINEERING STUDENT AFFAIRS

08 • MASTER'S STUDENT AFFAIRS

10 • POST-MASTER'S DEGREE
STUDENT AFFAIRS

12 • INTERNSHIPS

13 • CORPORATE RELATIONS
DEPARTMENT

14 • COMPANY CREATION

15 • INTERNATIONAL RELATIONS

16 • CRDN - LIBRARY

17 • YOUR DIGITAL ENVIRONMENT

18 • CAMPUS LIFE

19 • CABINET DEPARTMENT

20 • STUDENT ASSOCIATIONS

21 • MEET THE ALUMNI

22 • SUSTAINABLE DEVELOPMENT

23 • PATRONAGE

24 • PEDESTRIAN ACCESS, BY BIKE,
PUBLIC TRANSPORT, AND CAR

26 • CAMPUS GUIDE

28 • MAPS OF THE BUILDING

31 • STUDENTS' COMMON ROOM

32 • THE ÉCOLE POLYTECHNIQUE
DISTRICT

33 • CAMPUS DINING SERVICES

34 • SHOPS & SERVICES

36 • GETTING AROUND

Nicolas Glady President of Télécom Paris



Dear engineering students,

Welcome to Télécom Paris, the leading engineering school in the field of digital technologies and the second-ranked engineering school for three consecutive years in the *Étudiant* ranking. Our mission is to train engineers across the entire spectrum of digital technologies, equipping them with the skills to innovate and embark on exciting career paths in a world where digital solutions play a crucial role in addressing ecological and climate challenges.

Télécom Paris serves as a true open-air laboratory, leveraging innovative pedagogy that heavily emphasizes project-based learning. This approach will enable you to quickly acquire cutting-edge knowledge and experiences in the digital domains.

In today's world, new skills are essential to tackle the social and environmental challenges of tomorrow. At Télécom Paris, we focus on various scientific and technological domains, such as artificial intelligence, big data, machine learning, Internet of Things (IoT), cloud computing, quantum computing, 5G and 6G mobile networks, blockchain, and cybersecurity, and their applications across all industrial sectors. Our goal is to prepare you as digital engineers to become the architects of future solutions.

As a versatile school, Télécom Paris offers a myriad of opportunities. Graduates of Télécom Paris enjoy exceptional employability across various sectors, both in France and internationally. The strong ties we have established with companies and alumni will provide you with frequent networking opportunities during your studies, giving you insights into the vast array of potential career paths.

Your graduating class will comprise students from 40 different countries, and part of your education will take place abroad. Numerous pathways will be available to help you explore new horizons based on your preferences and aspirations.

Our state-of-the-art facilities, including lecture halls, classrooms, laboratories, and practical training rooms, are designed to ensure an excellent learning experience.

Beyond your academic pursuits, you will find a vibrant and diverse student life that allows you to grow personally and professionally, thanks to the dynamic associations on our brand-new campus!

We are delighted to welcome you as engineering students at Télécom Paris, the open-air laboratory for your future.

Sincerely,

Nicolas Glady
President of Télécom Paris

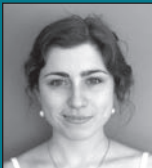
PRACTICAL INFORMATION

We're here to help

Remember! You're not alone! If you are having any personal, study-related, or campus life difficulties contact Marie or Odile.

Consultations on Tuesday, Wednesday, and Thursday mornings.

Schedule an appointment via email.



Marie Matherat

Psychologist

0A256 / Phone: 01.75.31.42.49
psy.eleves@telecom-paris.fr



Odile Feuillatre

Psychologist

0A256 / Phone: 01.75.31.42.49
psy.eleves@telecom-paris.fr

Difficulties related to excessive consumption (alcohol, tobacco, cannabis, or substance abuse).

Consultations on the last Wednesday afternoon of each month.

Schedule an appointment via email.



Alain Lagneau

Addictologist

0A252
addicto.eleves@telecom-paris.fr

Housing in Palaiseau

The Paris-Saclay campus provides students with a wide variety of housing opportunities in the immediate vicinity of Télécom Paris.

More information on:

www.telecom-paris.fr/logements

Supporting You

Personalized support based on encountered difficulties:

- Financial
- Social
- Administrative



Frantz Cayol

Admissions Officer

2C36 / Phone: 01.75.31.93.73
frantz.cayol@telecom-paris.fr

A social welfare advisor holds regular office hours at the school to provide you with information regarding your rights, scholarship opportunities, financial aid, etc.

For any inquiries, you can contact Frantz Cayol, who will direct you to the social welfare counselor and provide you with the schedule for office hours.

Campus life

In Palaiseau, the staff remains dedicated to helping you.



Sarah Bensalem

**Campus and Student Life Officer
Disability & Accessibility Officer**

2A482 / Phone: 01.75.31.92.19
sarah.bensalem@telecom-paris.fr



Tatiana Brevet

Campus and Student Life Officer

2A474 / Phone: 01.75.31.43.83
logement@telecom-paris.fr

DEAN OF STUDIES



The digital transformation is at work at all levels of society!

We want this transformation to be respectful of people and their environment.

IoT, virtual networks, the cloud, cybersecurity, and artificial intelligence are digital disciplines that are at the heart of the scientific and technological responses to the industrial challenges and new uses of a connected society. But how can we create solutions that take into account the major issues of the energy transition and social responsibility?

Télécom Paris, the first French Grande École in the field of digital technology, invites you to engage with this issue as an engineer, decision-maker, researcher, or even specialist capable of envisioning, designing, and analyzing complex digital systems; as a deeply educated and imaginative scientist, as well as an open-minded and conscientious professional aware of the challenges.

Welcome to our campus! Here you will develop your creativity, lay the groundwork for your scientific expertise, and refine your choices in an environment where students from more than 40 nationalities come together. So it's up to you to tap into your enthusiasm, your desire to learn and your openness to others to take full advantage of this exceptional and incredibly vibrant environment!

At the Dean of Studies, we are by your side to help you discover a unique profile.

On behalf of the entire team, I wish you an excellent academic year with us!

Bertrand David



DIRECTION



Bertrand David

Dean of Studies

2C21 / Phone: 01.75.31.93.32
bertrand.david@telecom-paris.fr



Sigolène Morin

Head of Academic Affairs

2C20 / Phone: 01.75.31.93.36
sigolene.morin@telecom-paris.fr



Annie Pebay

Executive Assistant

2C24 / Phone: 01.75.31.93.39
annie.pebay@telecom-paris.fr

Fees and Scholarships

Your tuition fees, scholarships, financial aid, and student life including your student card.



Engineering students

Frantz Cayol

2C36 / Phone: 01.75.31.93.73
frantz.cayol@telecom-paris.fr



Sandrine ROCHUT

Training Administrative Manager
2C34 / Phone: 01.75.31.93.56
sandrine.rochut@telecom-paris.fr

**Student
Health Insurance:**
www.ameli.fr

La Mutuelle des Étudiants (L.M.D.E.)

7 rue Danton
75006 Paris
Metro: Odéon (lines 4 et 10)
Monday to Friday - 8:30am to 5:30pm
Phone: 0811 50 56 33

HEYME (ex-SMEREPE)

Monday to Friday
9:00am to 5:50pm
Phone: 09 71 09 07 07
www.heyme.care/fr

Your residence permit

For further assistance, please contact:



Ana Balavoine

Assistant in the International Relations Department

5A420 / Phone: 01.75.31.94.72
assistante-dri@telecom-paris.fr

ENGINEERING STUDENT AFFAIRS



Sabrina Benhenni

Head of Academic Advisors
2C43 / Phone: 01.75.31.41.07
sabrina.benhenni@telecom-paris.fr

Depending on your year of study, the Academic Advisor is here to help.

1st-Year Students

For information regarding your course of studies, proof of registration, or course material, please contact your Academic Advisor.



Émilie Adam

Academic Advisor
2C38 / Phone: 01.75.31.93.70
emilie.adam@telecom-paris.fr



Fabienne Duc-Seillan

Academic Advisor
Coordinator of Studies, Professional Exploration and Internship 1A
2C30 / Phone: 01.75.31.92.24
duc-seillan@telecom-paris.fr



Study tracks GIN, RIO
Option SD
Themed tracks & work-study apprenticeships

Fabienne Duc-Seillan

Academic Advisor
2C30 / Phone: 01.75.31.92.24
duc-seillan@telecom-paris.fr



Study tracks and options IMA, MACS, MITRO & ATHENS week, CU Time slot D

Sylvia Alves De Sousa

Academic Advisor
2C46 / Phone: 01.75.31.93.71
sylvia.alvesdesousa@telecom-paris.fr



Study tracks SD, MODS & SLR
Options MIN, SLR, SES, Interpersonal Training programs, and Polytechnic students

Magali Leblond

Academic Advisor
2C47 / Phone: 01.75.31.93.74
magali.leblond@telecom-paris.fr

2nd & 3rd-Year Students



Theater and Contemporary Humanities

Carole Peltier

Academic Advisor
2C26 / Phone: 01.75.31.93.76
carole.peltier@telecom-paris.fr



Study tracks ACCQ, IGR, SE, TSIA, TELECOM. Options IA, QEng
Auditors in exchange programs

Jérôme Cahors

Academic Advisor
2C45 / Phone: 01.75.31.93.72
jerome.cahors@telecom-paris.fr



Study track and option SR2I

Valérie Weider Monteillet

Academic Advisor
2C41 / Phone: 01.75.31.96.17
valerie.weider@telecom-paris.fr

MASTER'S STUDENT AFFAIRS

YOU ARE IN A MASTER'S DEGREE PROGRAM OF THE INSTITUT POLYTECHNIQUE DE PARIS

DESIGN, DATA AI, ICS, IGD, MICAS, MVA, SETI, IREN, DATA SCIENCE

For your registration, schedule, or school attendance certificate, you can contact your academic advisor at the Dean of Studies department - in hallway 2C.



Danielle Deloy

Academic Advisor
Master's students from the Institut Polytechnique de Paris: Design, Data AI, ICS, IGD, MICAS, MVA, SETI

2C32 / Phone: 01.75.31.93.37
danielle.deloy@telecom-paris.fr



Myriam Turpin

Academic Advisor
Master's students from the Institut Polytechnique de Paris: IREN et DATA SCIENCE

2C41 / Phone: 01.75.31.99.02
myriam.turpin@telecom-paris.fr

65 master's degrees are offered within the Institut Polytechnique de Paris, 8 of which are offered at Télécom Paris:

- > M2 Research in Design
- > M2 ICS Integration, Circuits & Systems
- > M2 MICAS Machine Learning, Communications and Security
- > M2 SETI Embedded Systems & Information processing
- > M1-M2 Data AI Data & Artificial Intelligence
- > M1-M2 IGD Interaction, Graphic & Design
- > M2 MVA Mathematics, Vision, Learning
- > M2 IREN Network Industries and Digital Economy

ADMINISTRATION FOLLOW-UP

POST-MASTER'S DEGREE

Do you need advice on financing your post-master's degree?

Do you have questions about billing and payment?

Would you like to be an elected member or representative of the school's Teaching Committee?

Would you like to promote your training to future candidates as an ambassador of your post-master's degree?

Don't hesitate to get in touch!



Sandrine Rochut

Training administrative manager

Help with financing applications - Setting up your financing

Student elections and representatives coordinator

2C34 / Phone: 01.75.31.93.56

sandrine.rochut@telecom-paris.fr

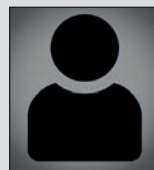


Angélique Bigot

Admissions Officer for Post-Master's Degrees

2B53 / Phone: 01.75.31.92.97

angelique.bigot@telecom-paris.fr



Kelly Djabour

Business Development Manager

post-master's student recruitment

Communication, promotion, ambassadors of the post-master's degree

2B54 / Phone: 01.75.31.93.30

kelly.djabour@telecom-paris.fr



POST-MASTER'S DEGREE

STUDENT AFFAIRS

Dedicated support coordinators are here to guide you depending on your Post-Master's Degree:

- > Your admissions
- > Academic follow-up & certification
- > Proof of registration
- > Internships



Sabrina Benhenni

Head of Academic Advisors
2C43 / Phone: 01.75.31.41.07
sabrina.benhenni@telecom-paris.fr



Christine Dugas

MS: Network and Cybersecurity Architect /
Regulation of the Digital Economy
2C42 / Phone: 01.75.31.96.12
christine.dugas@telecom-paris.fr



Sabine Seynou

MS: Management of Information Systems
in Networks / Smart Mobility
2C28 / Phone: 01.75.31.96.16
sabine.seynou@telecom-paris.fr



Laurent Hasquenoph

MS: Big Data / Artificial Intelligence /
Enterprise Digital Architect
2C44 / Phone: 01.75.31.41.08
laurent.hasquenoph@telecom-paris.fr



Valérie Weider Monteillet

MS: Network Design and Architecture,
and Cybersecurity and Cyberdefense
2C41 / Phone: 01.75.31.96.17
valerie.weider@telecom-paris.fr



PROGRAM LEADERS - POST MASTER'S DEGREE

Big Data (Massive Data Management and Analysis) & Artificial Intelligence

Marc Jeanmougin

marc.jeanmougin@telecom-paris.fr / Phone: 01.75.31.97.92

Charlotte Laclau

charlotte.laclau@telecom-paris.fr

Stephan Clemençon

stephan.clemencon@telecom-paris.fr / Phone: 01.75.31.97.05

Cyber Security and Cyber Defence

Thomas Robert

thomas.robert@telecom-paris.fr

Phone: 01.75.31.97.82

Design, Network Architecture and Cyber Security

Mounira Msahli

mounira.msahli@telecom-paris.fr

Phone: 01.75.31.98.42

Digital Economy Regulation

David Bounuie and Yann Balgobin

david.bounuie@telecom-paris.fr

Phone: 01.75.31.98.80

Enterprise Digital Architect

Keunwoo Lim

keunwoo.lim@telecom-paris.fr

Phone: 01.75.31.98.22

Information Systems Management

In partnership with ESSEC

Stefano Zacchioli

stefano.zacchioli@telecom-paris.fr

Phone: 01.75.31.92.06

Innovation and Entrepreneurship

Samuel Huron

samuel.huron@telecom-paris.fr

Phone: 01.75.31.99.12

Network and Cyber Security Architect

Nathalie Cerre

nathalie.cerre@telecom-paris.fr

Phone: 01.75.31.96.02

Smart Mobility: Digital Transformation of Mobility Systems

In partnership with École des Ponts ParisTech

Mathieu PY (École des Ponts)

INTERNSHIPS

& PROFESSIONAL PROJECT SUPPORT

Your internship and professional project support

Throughout your studies, the Career Development Center will help you to unlock your professional ambitions. Key networking events such as the BeForum, as well as many others, are designed to give you a head start on the job market.



Marie-Hélène Piovano

Professional Projects and Internship Manager of engineering tracks and master's (design, data AI, ICS, IGD, MICAS, MVA, SETI)

2C15 / Phone: 01.75.31.93.77
marie-helene.piovano@telecom-paris.fr



Véronique Sardent

Professional Project and Internship Manager for the Master's Degree

2C17 / Phone: 01.75.31.40.14
veronique.sardent@telecom-paris.fr

TOOLS AT YOUR DISPOSAL

Télécom Paris' Career Development Center

On the Télécom Paris-Jobteaser career site (registration access is available using your Télécom Paris login details), check out the internship offers, work-placement apprenticeships, professionalization contracts, and the calendar of events organized by the Corporate Relations.



Stay on top of your applications

Design your CV and cover letter on CV DesignR, a Télécom Paris partner, with exclusive templates. Request proofreading from a graduate of the school (invitation to create an account provided to new students at the beginning of the school year). The IP Paris ELEVATE Center as well as the Languages and Cultures Department is also at your disposal for proofreading CVs and Statements of Purpose.



CORPORATE RELATIONS DEPARTMENT

EVENTS, EXPERT SEMINARS, PARTNERSHIPS

NETWORKING OPPORTUNITIES



Sylvain Lamblot

Corporate Relations Director
3A441 / Phone: 01.75.31.93.97
sylvain.lamblot@telecom-paris.fr



Céline Hervieu

Corporate Relations Manager
3A442
Phone: 01.75.31.93.96 / 06.12.38.34.27
celine.hervieu@telecom-paris.fr



Céline Delagneau

Corporate Partnerships and
Apprenticeship Tax Manager
3A442 / Phone: 01.75.31.93.98
celine.delagneau@telecom-paris.fr

Be the first to know about
upcoming events here:



Meet with companies throughout
the year.

Check out internship offers, events
on SynapseS and register for the
Career Development Center:

telecom-paristech.jobteaser.com



Marco Boubille

Corporate Partnerships Officer
3A438
Phone: 01.75.31.93.94 / 06.03.75.53.13
marco.boubille@telecom-paris.fr



Catherine Marliacy

Corporate Partnerships Officer
3A438
Phone: 01.75.31.96.19 / 06.23.21.39.61
catherine.marliacy@telecom-paris.fr



Rose-Marie Ferry

Assistant
3A436 / Phone: 01.75.31.93.95
rose-marie.ferry@telecom-paris.fr

**Job
opportunities**

**Networking with the Telecom Paris
alumni:**

www.telecom-paris-alumni.fr

Career services:

bcar@telecom-paris-alumni.fr

Contact:

relationsentreprises@telecom-paris.fr

COMPANY CREATION

Student entrepreneurship



Daniela Peschard

Management officer on innovation and student entrepreneurship
2C13 / Phone: 01.75.31.93.31
D07 at 9 rue Dareau - 75014 Paris
peschard@telecom-paris.fr

ADMINISTRATIVE DIVISION



Marie-Anne Lebrec

Director of Innovation and Entrepreneurship Projects
Phone: 01.75.31.92.17
marie-anne.lebrec@telecom-paris.fr

PEDAGOGY DIVISION



Thomas Houy

Professor-researcher of management
Phone: 01.75.31.98.95
thomas.houy@telecom-paris.fr

Want to set up your own business? At Telecom Paris, you're at the threshold of success!

The incubator, located in Paris, has been structuring and supporting innovative digital projects in France since 1999. Specialized in supporting deeptech startups in the digital sector, the incubator has hosted more than 500 projects since its launch, including those in Data, AI, robotics, IoT, health, environment, and blockchain.

More than €1 billion has been raised by the incubator's companies since 2015.

Get in touch today to gain access to personalized coaching and expert mentoring from start to launch.

<https://telecomparis-entrepreneurs.fr>

Contact: contact-incub@telecom-paris.fr

INTERNATIONAL RELATIONS

International Relations Department (DRI)



Jean-François Naviner
Director of International Relations
Latin America
2C64 / Phone: 01.75.31.94.24
jean-francois.naviner@telecom-paris.fr



Catherine Vazza
Deputy director, Outgoing Mobility
Manager
*Western and Southern Europe, Canada
and USA*
2C60 / Phone: 01.75.31.94.26
catherine.vazza@telecom-paris.fr



Christine Gallet
International Marketing and
Communication Manager
2C55 / Phone: 01.75.31.99.58
christine.gallet@telecom-paris.fr



Claude Allafort
Incoming Students Coordinator
Northern and Eastern Europe
2C61 / Phone: 01.75.31.94.23
claude.allafort@telecom-paris.fr



Nicolas Prost
International Project Manager
Erasmus Coordinator
Africa, Asia, Oceania
2C58 / Phone: 01.75.31.94.25
nicolas.prost@telecom-paris.fr



Sandrine Bobeau
DRI Assistant
2C65 / Phone: 01.75.31.92.05
sandrine.bobeau@telecom-paris.fr



Ana Balavoine
Management of residence permits
DRI Assistant
5A420 / Phone: 01.75.31.94.72
ana.balavoine@telecom-paris.fr

Languages and Cultures Department

Give your international communication skills a boost.



Maria-Teresa Guilbert
Head of the Languages and Cultures
Department
3A230 / Phone: 01.75.31.93.53
maria-teresa.guilbert@telecom-paris.fr



Estelle Henri
Academic officer
3A228 / Phone: 01.75.31.93.55
estelle.henri@telecom-paris.fr

The Languages & Cultures and International Relations departments help you integrate at Télécom Paris.

- Start of term: a treasure hunt and integration activities to socialize and discover the campus and surrounding area.
- Fall: French Village, an opportunity to sample French culinary specialties.
- Spring: International Village, an evening celebrating international specialties.
- All year round: visits, theater, photo exhibitions, language tandems, etc.

CENTER FOR DOCUMENTARY AND DIGITAL RESOURCES (CRDN)



Sophie Chouaf

CRDN - Executive Library Director
2A203 / Phone: 01.75.31.95.52
sophie.chouaf@telecom-paris.fr



Imène Denine

Digital Access Librarian
HAL Administrator and Thesis Correspondent
2A405 / Phone: 01.75.31.95.54
imene.denine@telecom-paris.fr



Valérie François

Cultural funds and Communication
Coordinator
2A403 / Phone: 01.75.31.95.51
valerie.francois@telecom-paris.fr



Betty Raymondie

Scientific funds and PEB (interlibrary
loans)
2A403 / Phone: 01.75.31.95.53
betty.raymondie@telecom-paris.fr



Margaux Dumont

Administrative Manager
2A403 / Phone: 01.75.31.95.48
margaux.dumont@telecom-paris.fr

WELCOME TO YOUR COMFORT ZONE

BUILDING A, 2ND FLOOR

A RELAXATION LOUNGE

A WORK-STUDY ROOM

A GENERAL COLLECTION

11 COLLABORATIVE WORKSPACES



BIBLIOTHÈQUE
Centre de Ressources
Documentaires & Numériques

CRDN

The CRDN is open every day:
> Monday to Friday (academic
year) from 9am to 10pm
> Weekends from 12pm to 9pm

Phone: 01.75.31.95.50
bibliotheque@telecom-paris.fr

www.telecom-paris.fr/fr/campus/bibliotheque



@bibliotheque_telecomparis



YOUR DIGITAL ENVIRONMENT AT THE SCHOOL

ZIMBRA

Email account and online scheduler:

<https://zimbra.imt.fr>

SYNAPSES

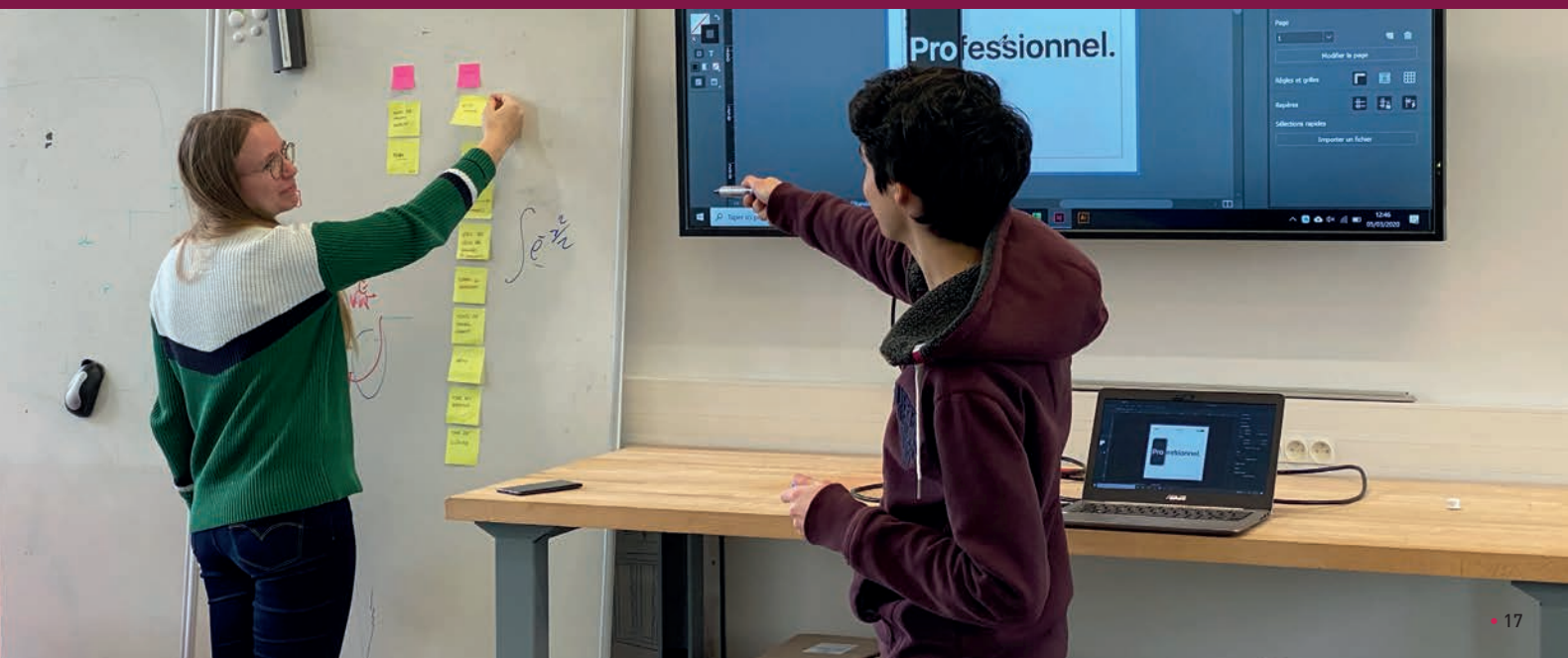
Use SynapseS to view the full online course catalogue, course descriptions and requirements, your registration status, schedule, academic results, etc.

DIGITAL SERVICES

Internal services include:

- > A computer account,
- > An individual storage space,
- > Free access workstations,
- > Photocopying and printing services,
- > Access to the Télécom Paris network.

<https://eole.telecom-paris.fr/vos-services>



CAMPUS LIFE

REPRESENT STUDENTS WITHIN TÉLÉCOM PARIS COMMITTEES

Make you and your classmates' voices heard by becoming a representative in the school's various authorities.

Information on the EOLE website:
eole.telecom-paris.fr

- ☆ Education committee
- ☆ School Council
- ☆ 1st year council
- ☆ The board meeting of IMT
- ☆ The board meeting of IP Paris
- ☆ Academic juries

STAY INFORMED



telecom-paris.fr



[@TelecomParis](https://www.facebook.com/TelecomParis)



[Télécom Paris](https://www.linkedin.com/company/TelecomParis)



[@telecom_paris](https://www.instagram.com/telecom_paris)



[@TelecomParis](https://twitter.com/TelecomParis)



[TelecomParis](https://www.youtube.com/TelecomParis)

Be Well to Do Well

The fight against harassment, discrimination and violence, including sexist and sexual violence, is one of Télécom Paris' top priorities.

Together, let's make our school a place of respect and openness!

A Prevention & Counseling Center is here to help you.

cellule.ecoute@telecom-paris.fr



Françoise Schlotterer

Respect and Equality Officer
Project Manager at the Dean of Studies

Phone: 01.75.31.93.78

francoise.schlotterer@telecom-paris.fr

Victim or witness of any form of discrimination, you can file a report with the listening unit or through the reporting platform at <https://imt.signalement.net>

Disability & Accessibility Officer

accompagnement-handicap@telecom-paris.fr



Sarah Bensalem

Disability & Accessibility Officer / Campus & Student Life Officer

2A482 / Phone: 01.75.31.92.19

accompagnement-handicap@telecom-paris.fr

CABINET DEPARTMENT



The Chief of Staff, **Stéphane Potelle**, oversees the cross-functional strategic initiatives of the institution: ecological and energy transition, diversity, gender equality.

Delegates and representatives from the Chief of Staff's Office provide guidance to students in their projects.

DIVERSITY AND INCLUSION DELEGATION



Dominique Célier

Delegate for Ecological Transition

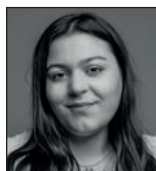
2C54 / Phone: 01.75.31.92.28
dominique.celier@telecom-paris.fr



Christelle Thomas

Delegate for Diversity and Inclusion

2C56 / Phone: 01.75.31.93.38
christelle.thomas@telecom-paris.fr



Jennifer Ben Khemis

Officer for Sustainable Development and Corporate Social Responsibility

2C54 / Phone: 01.75.31.94.48
jennifer.benkhemis@telecom-paris.fr



Tixie Laisné

Ecological Transition and Diversity Apprentice

2C54 / Phone: 01.75.31.94.50
tixie.laisne@telecom-paris.fr

Taking action and transforming schools

to protect the environment.

Stand up for diversity:

- Gender equality • Social inclusion
- Disability & accessibility

Become an ambassador for Télécom Paris by attending the recruitment forums and job fairs. Promote the school for new applicants and through the Comète student organization.

COMMUNICATION DELEGATION



Sophie Buron

Head of Communication

Events and Social Media
2C53 / Phone: 01.75.31.92.27
sophie.buron@telecom-paris.fr



Adeline Da Cunha

Delegate for Communication

Events and Social Media
2C53 / Phone: 01.75.31.92.27
sophie.buron@telecom-paris.fr



Stéphane Boucart

Editorial webmaster

Information posted on the Internet
2C48 / Phone: 01.75.31.92.26
stephane.boucart@telecom-paris.fr



Nadia Defrance

Communications Assistant

Preparatory Classes Fair and admitted-students orientation weeks
2C51 / Phone: 01.75.31.92.29
nadia.defrance@telecom-paris.fr



Michel Desnoues

Multimedia and DTP Graphic Designer

Photo & video content
2C49 / Phone: 01.75.31.92.30
michel.desnoues@telecom-paris.fr



Noémie Larotte

Communications Officer Apprentice

Events and Social Media
2C52 / Phone: 01.75.31.95.25
noemie.larotte@telecom-paris.fr

STUDENT ASSOCIATIONS



MORE THAN 40 WAYS

TO GET INVOLVED

Telecom Paris students distinguish themselves by taking an active role in campus life and the community.

The Student Union is our school's vibrant hub for numerous associations where you can discover and develop new talents to make a long-lasting impact.

Can't find what you're looking for? Contact the Student Union to create a new club.

The Student Union



- Welcomes new students and facilitates integration into the school's academic and social life.
- Represents students at the school's management and administrative level.
- Organizes and coordinates relations with companies and students through events and sponsorships.
- Coordinates activities offered by the different clubs to ensure a rich, student life.
- Organizes social events, trips abroad, sporting events, etc.

Contact: bde@telecom-paris.fr

Your community and campus life advisor



Sarah Bensalem

Campus and Student Life Officer
Disability & Accessibility Officer

2A482 / Phone: 01.75.31.92.19

sarah.bensalem@telecom-paris.fr

MEET THE ALUMNI



ALUMNI REPRESENTATIVES



Isabelle Dubillon
(Class of '83)

Managing Director
2A440 / Phone: 01.75.31.42.59
isabelle.dubillon@telecom-paris.fr



Naveena Kamalakaran
Student Relations Communications Officer
2A440 / Phone: 01.75.31.42.60
naveena.kamalakaran@telecom-paris.fr

WHY CALL ON US?

- > **Mentoring:** we put you in touch with a coach who can advise you throughout your journey.
- > **Support:** interest-free loans can help you with specific projects in case of financial difficulties.
- > **Advice and networking:** develop your extracurricular and professional projects.



From the first moment you enter the school, you will be involved in the alumni network, which is made up of former students of Télécom Paris.

More than 19,000 graduates in France and abroad are available to answer your questions and guide you in finding a job in France or abroad and even help you to choose your academic track at the school. They would be more than happy to share their experience with you.

By keeping your profile up-to-date on: www.telecom-paris-alumni.fr, activating your email for life (a sign of recognition between graduates and companies), you will remain informed of all the activities that the network offers.

Welcome to our network, your network!



Hélène Delahousse-Haverbeke
(Class of '93)

President of
Télécom Paris alumni



Alexandra DENIAUD
(Class of 2022)

Vice President of
Télécom Paris alumni



SUSTAINABLE DEVELOPMENT

An HQE building

Our new building has been designed for High Quality Environmental (HQE) classification. HQE is a voluntary approach to managing the impact on the environment generated by a building while providing its occupants with healthy and comfortable conditions throughout the life of the structure.

The heating network

Our campus benefits from a heating network based on deep geothermal energy. The buildings are supplied with 60% renewable energy from the Albien geothermal aquifer at a depth of 700 metres. This solution emits three times less CO2 emissions than a traditional system and, on such a large scale, is a worldwide first. Our Paris-Saclay urban campus was recently awarded the Positive Energy Territory for Green Growth (Territoire à énergie positive pour la croissance verte) label and is a truly remarkable technological showcase.

Recycling and waste management

Our campus sorts its waste and separates paper and cardboard, computer waste (D3E), ordinary industrial waste, liquids and hazardous materials.

The collection and recycling or elimination is carried out with respect for and protection of the environment. To do this, the school has chosen an ethical and supportive company that collects batteries, paper, and D3E cartridges while creating local and sustainable jobs for people with disabilities. Finally, the school is experimenting with the co-creation of a compost for vegetable waste with the students.

Calling all volunteers!

A responsible digital school

The school has systematized digitalization, a document sharing server, centralized printing and recycled paper and is committed to eliminating plastic. But above all, the school offers you a whole range of tools for distance learning, videoconferencing, and digital spaces to optimize your work-travel needs and enrich your learning.

Committed to a sustainable meal service

Our self-service restaurants and cafeterias are committed to diversifying daily meals, in particular, by integrating a quality vegetarian offering and also to making progress in terms of local and organic sourcing of ingredients, reducing food waste, sorting and recovery of bio-waste, and the use of 100% biodegradable cleaning products.

Sustainable commuting

The public transport network on the plateau and towards the main stations is constantly being improved. The use of low-impact mobility options on the environment is facilitated by electric bicycle terminals by subscription, at the foot of the building, and in the surrounding area or at neighboring stations. And through the possibility of recharging electric vehicles in our parking garage and in the vicinity.



PATRONAGE

Endowed Spaces

You will notice that many rooms, spaces, and seats in the main Thevenin amphitheater, are named after certain individuals. These are the names of those who have generously offered a donation to the school. Patronage, or endowment, is the act of showing appreciation for a financial donor (e.g. an individual, company, group of people, etc.) by placing their name on a space or piece of equipment. Endowment can be for a limited period of time or for life. In our building, we have offered patrons the choice to name a space for ten years or for life, depending on the amount given. The patron's name is written on a plaque at the entrance of the space or on the seat chosen by the donor. Donors are mainly alumni but also parents of students. It's a special way for them to show their appreciation for the school.

The act of honoring donors on campus property was first introduced in the United States in cultural and higher education institutions. In France, this practice is still quite recent and is mainly seen in stadiums and cultural spaces. Other leading engineering schools, such as Polytechnique and CentraleSupélec, have launched major patronage campaigns to cultivate their resources and foster the improvement of their schools. In this context, Télécom Paris has launched its own support and development campaign.

The funds raised through this patronage campaign are used to finance the school's four main pillars: social diversity - international initiatives - entrepreneurship - scientific excellence and innovation. Thanks to these donations, students receive scholarships for academic achievement, others can expand their academic horizons, talented professors are recruited, and equipment is financed. This is an exceptional opportunity for the school to prosper in the new ecosystem of the Institut Polytechnique de Paris.

Since 2014, this initiative has raised €900,000.



Percent for Art

The term Percent for Art refers to a program where a percentage of the cost of large-scale development projects is dedicated to fund and install public art.

For our new building, the work of the visual artist Evariste Richer and his team was selected. **INFRAWIND & METACLOUD** is a dual-discourse work. The artist, born in 1969 in Montpellier, describes the creation as "Poetry" which exalts the architects' undertaking and the "Meteorological" map of the community spaces of the building.

In his own words, The INFRAWIND & METACLOUD weather map, inspired by cloud patterns, the compass rose, and the interlocking filaments of feathers, or barbules, is spread throughout the entire site. Through this work, I have composed a new framework of architecture, revealing a changing climatic landscape intertwined with engineering and science.

Evariste Richer associates each floor with a shade of blue, giving way to isolated clouds on large enameled plates in the main lobby and wind roses to indicate the directions to the different spaces.

The furnishings, in a seventh shade of blue, complete the system. Tables, benches and stools, in the interlocking barbules, symbolize the breeze and accompany the movements of staff and students within the building.

PEDESTRIAN ACCESS

The school is located at 19 place Marguerite Perey in Palaiseau, 91120

GPS coordinates : 48.712793, 2.199441

Opening hours of the main reception desk: 7:00am to 8:00pm, Monday to Friday Télécom

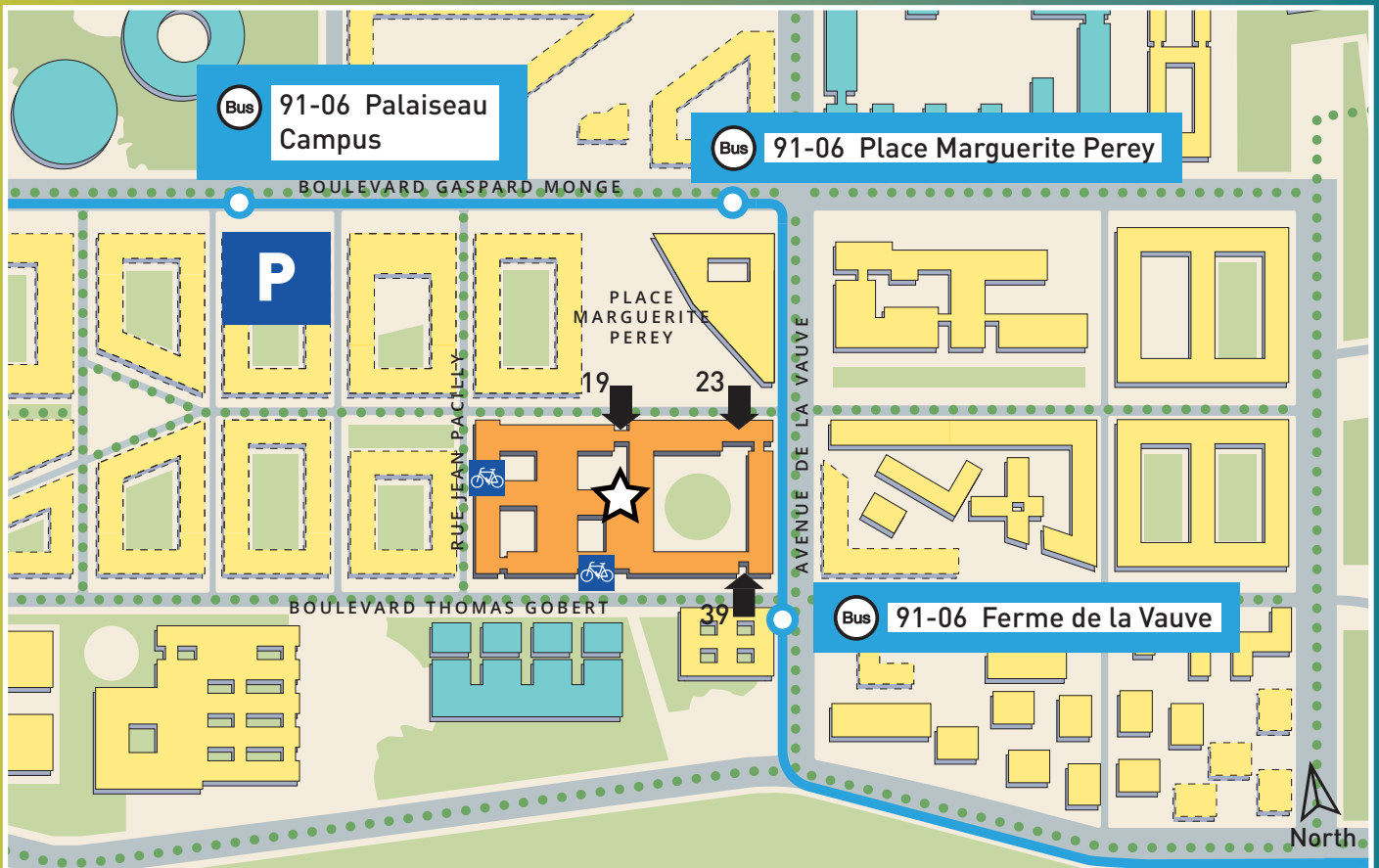
Paris Reception Desk: +33 1 75 31 92 00

Building security: +33 1 75 31 40 17

★ The reception desk is opposite the main entrance, at 19 place Marguerite Perey.

Building access is also possible at:

- ➡ 23 place Marguerite Perey
- ➡ 39 boulevard Thomas Gobert
- ➡ 17 rue Jean Pacilly



ACCESS

BY BIKE, PUBLIC TRANSPORT AND CAR

By bike

Bike paths (shown in green dotted lines on the map opposite) allow for safe travel on the Plateau de Saclay. They allow access to the Moulon District but also to the surrounding towns: Palaiseau, Orsay, Massy, Saclay, etc.

Moreover, a Zoov electric bicycle station is located at the base of our building. About twenty bicycles are available for use between the Camille Claudel district and the Quartier du Moulon.

Parking lots within the building (total capacity of 130 bikes) are accessible through the entrance located at:

- 33 boulevard Thomas Gobert

By public transport

> **From the Massy-Palaiseau station RER B and RER C (15 minutes) - Exit: Gare routière Garnier**

At the train station, go to the Gare routière Garnier exit and take the 91.06 or 91.10 bus. Get off at Ferme de la Vauve or Place Marguerite Perey.

> **From the Lozère RER B station (25 minutes)**

Pedestrian route of about 300 steps, a distance of 1.5 km.

Take the stairs towards the École Polytechnique and walk to the building.

> **From the Guichet RER B station (20 minutes)**

Pedestrian itinerary of 1.5 km.

Take the Passage du Buisson and cross the Carrière de la Troche to reach the Plateau.

HOURS FOR BUS 91.06

The first bus leaves from the Massy-Palaiseau station at 6:00am.

Buses come about every 3 to 4 minutes during rush hour (6:56am – 10:00am and 4:00pm – 7:00pm).

The last bus travelling to the Massy-Palaiseau station leaves at 12:14am.

Outside rush hour times:

Buses come about every 15 minutes.

By car

The parking lot located in the basement of the school is reserved for staff members.

A second 420-space paid parking lot is accessible from boulevard Gaspard Monge and rue Jean Pacilly.

About 40 spaces are located around the school in a paid zone.

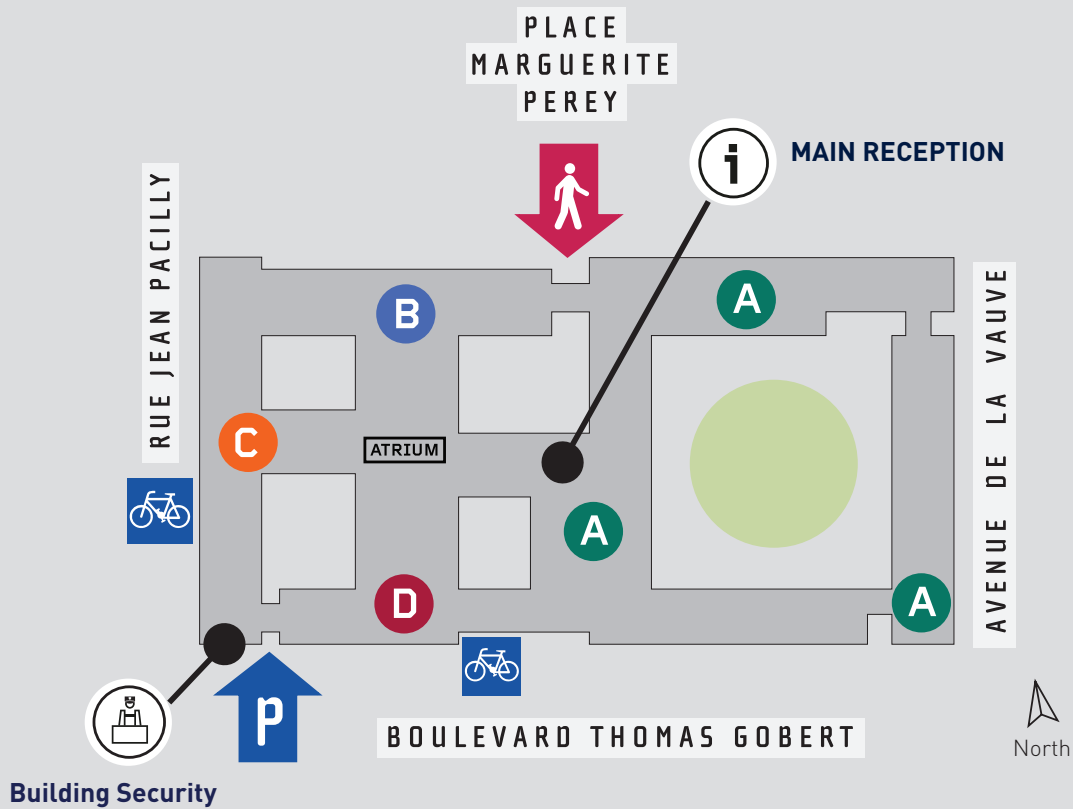
Consult ParkInSaclay (website and application) to find all the parking spaces near the school, as well as their availability in real time.

CAMPUS GUIDE

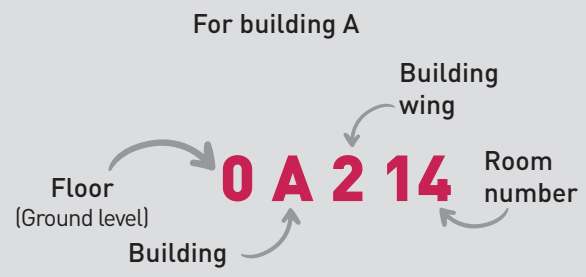
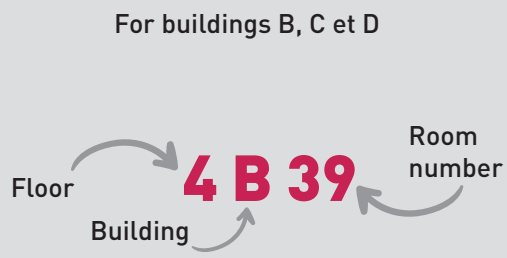
Inside the atrium, the main lobby branches out into the communal, teaching, and research areas.

Telecom Paris is composed of four buildings, A, B, C and D, is five storeys high, and includes an underground basement level.

i The main reception desk is located on the ground floor of Building A1, which leads into the atrium.



Office and room numbers are based on the following model:



Below is a list of the main departments and their location in the building:

Teaching and Research Departments

Dean of Studies - Engineering students, IP Paris Master's & Mastères Spécialisés	2C19 to 2C24 ; 2C13 to 2C17 and 2C26 to 2C48
Communications & Electronics Department — COMELEC	3B, 3C and 3D
Admin — COMELEC	3C22
Images, Data, Signal Department — IDS	5A101 to 5A109, 5B, 5C and 5D
IDS Labs	-1
Department of Computer Science and Networks — INFRES	4B, 4C and 4D
INFRES Labs	-1
Languages and Cultures Department — LC	3A228 to 3A248
Economics & Social Sciences Department — SES	3A251 to 3A265, 3A3, 3A459 to 3A486
Research Department	3A433 to 3A437, 3A439, 3A445, 3A449, 3A451 to 3A454
Research and Pedagogy Showroom	0B03

Executive Department & The President

Chief of Staff	5A401, 5A405 and 2D14
Human Resources Department	2C50
Secretary-General	5A407 to 5A420
Secretary-General - Building and Logistic Department	5A402, 5A404 and 5A406
Secretary-General - Financial Department	2A446 to 2A498
	2A329 to 2A344

Support Services

Social Diversity & Handicap Officer	2C56
Ecological Transition Officer	2C54
Communications Department	2C48 to 2C53
Corporate Relations Department	3A438 to 3A443
International Relations Department	3A444 to 3A458
IT Systems Department (DSI)	2C55 to 2C64
Student & Campus Life and Disability Office	2A203 to 2A263, 2A306 to 2A326, 2A403 and 2A405
	2A482

Télécom Paris alumni program

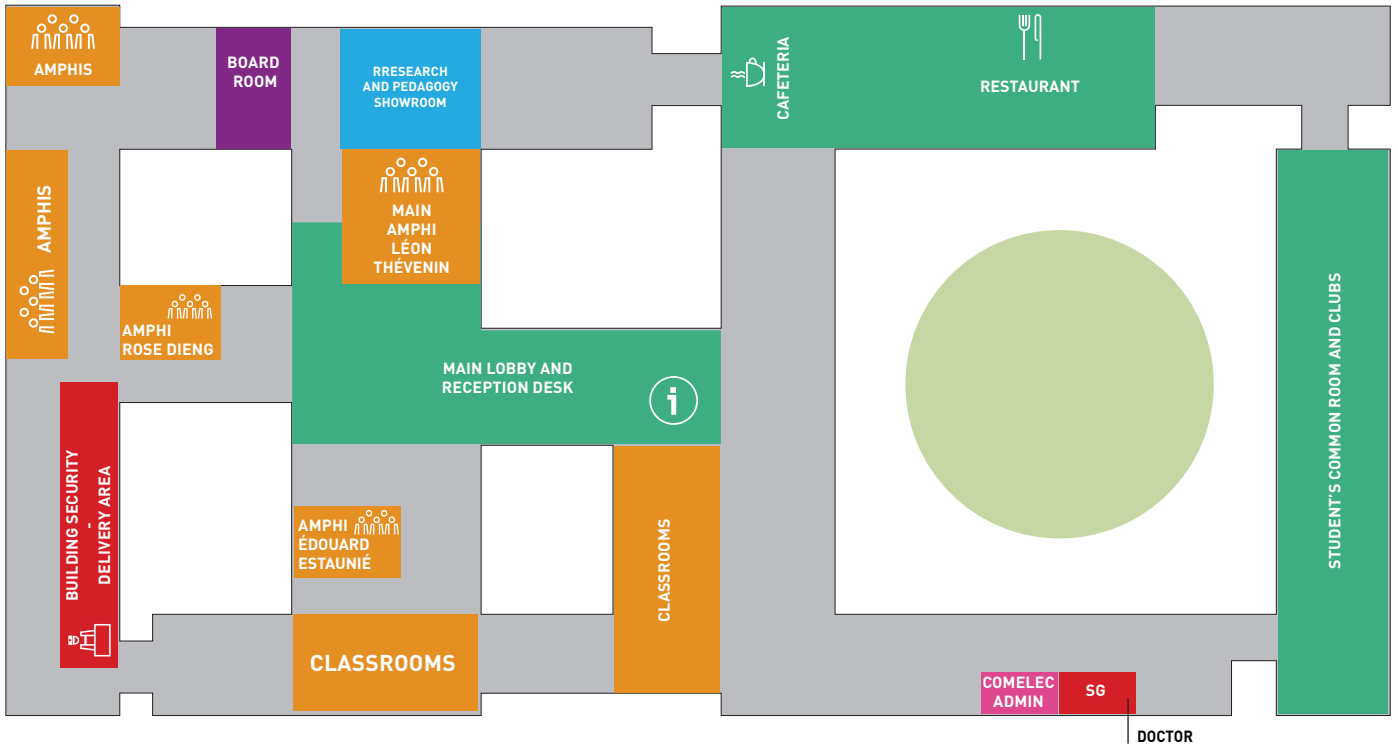
Boardroom	2A440
Building Security	0B05
CRDN — Library	0C77
Doctor	2A1, 2A2, 2A4
Infirmary	0A258
Main reception	0C73
Multipurpose exercise studio	Ground floor
Social worker and welfare counselor	0A301
Student's Common Room	0A258
The e-Lab	0A333
The FabLab	2A237
The WAN Restaurant	2A237
The Weeky Cafeteria	0A4
The Worko Cafeteria	0A4
Studio Design	2A1
	0B03

**TÉLÉCOM
PARIS**

**COMMUNITY
AND
NETWORKING
AREAS**

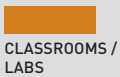
MAPS OF THE BUILDING

GROUND FLOOR



1ST FLOOR





CLASSROOMS / LABS



T EL ECOM PARIS: TEACHING AND RESEARCH DEPARTMENT



COMMUNAL AND LEISURE AREAS



T EL ECOM SUDPARIS



COLLABORATIVE AREAS (MEETINGS, VISIO, ETC.)



IMT GENERAL DIRECTION

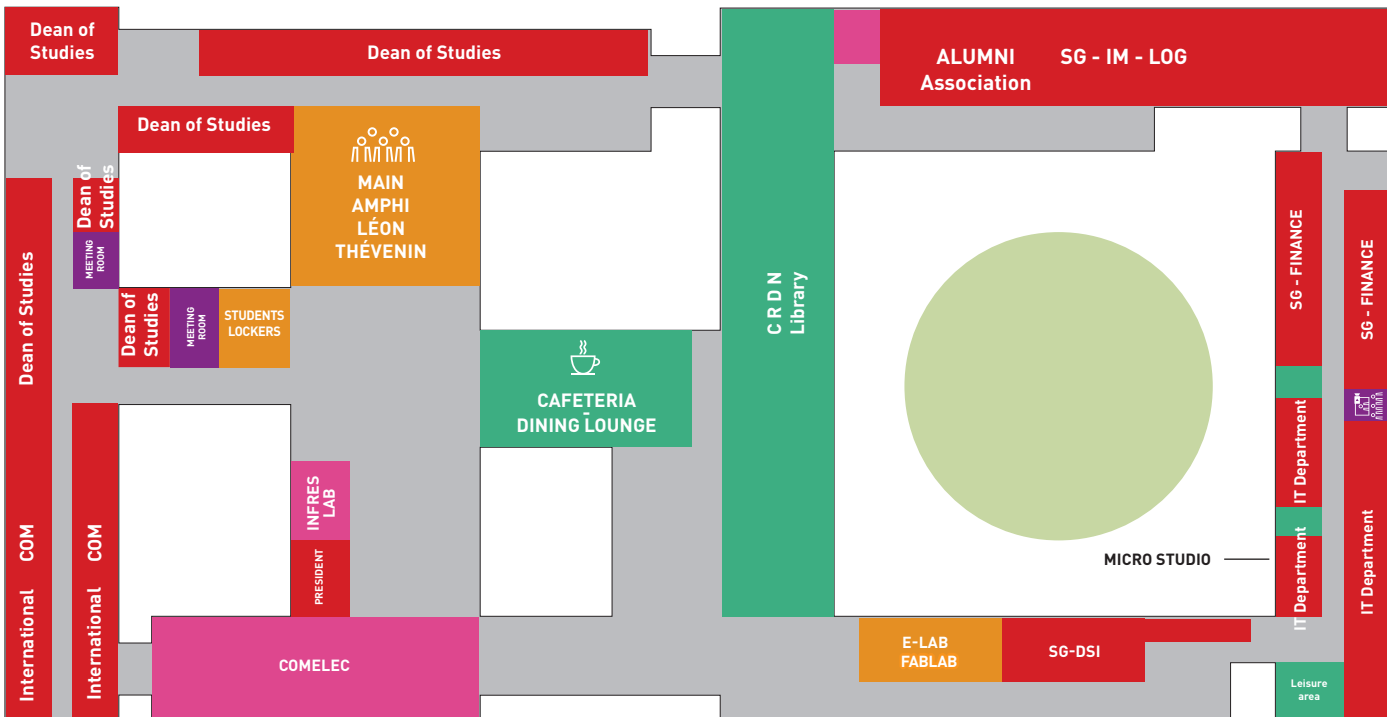


T EL ECOM PARIS: ADMINISTRATION & SUPPORT SERVICES - ALUMNI

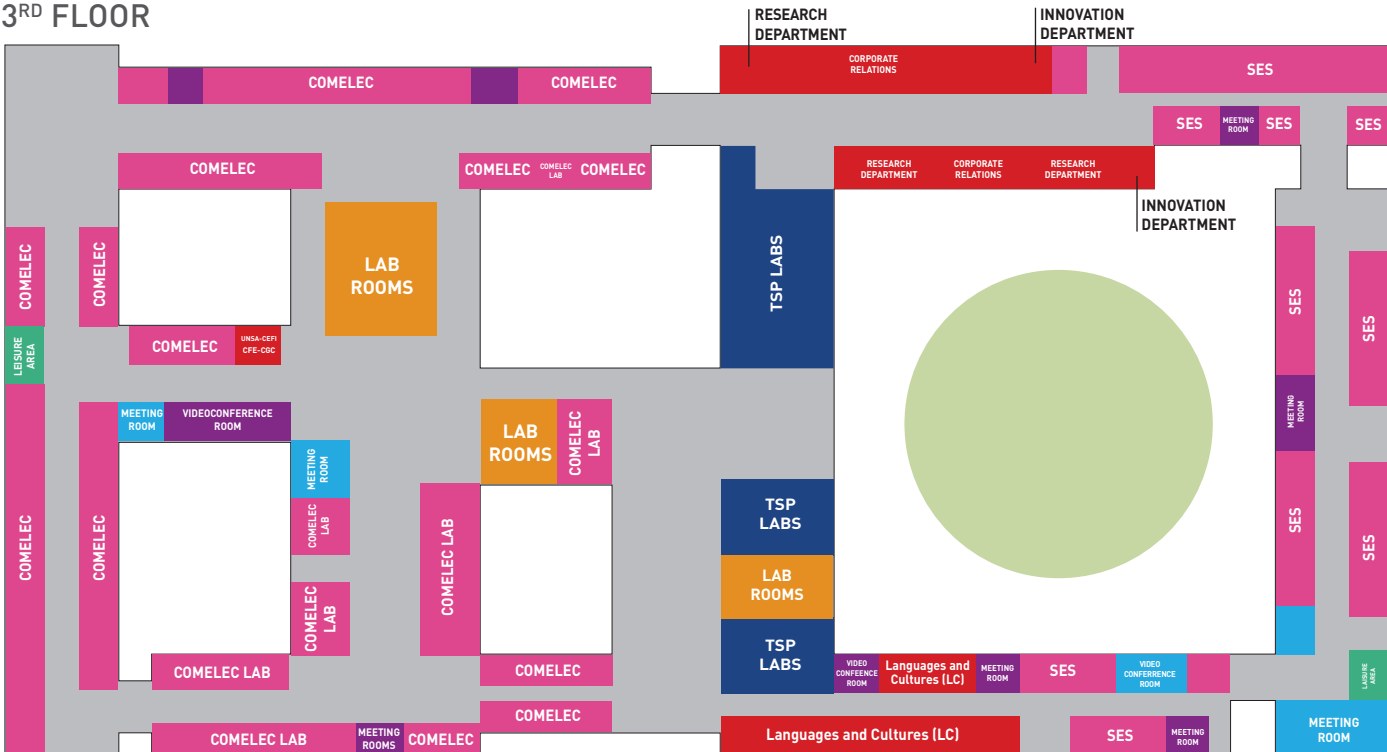


VARIOUS COLLABORATION / TEACHING SPACES PRIOR TO THE OPENING OF A NEW EDUCATION BUILDING

2ND FLOOR



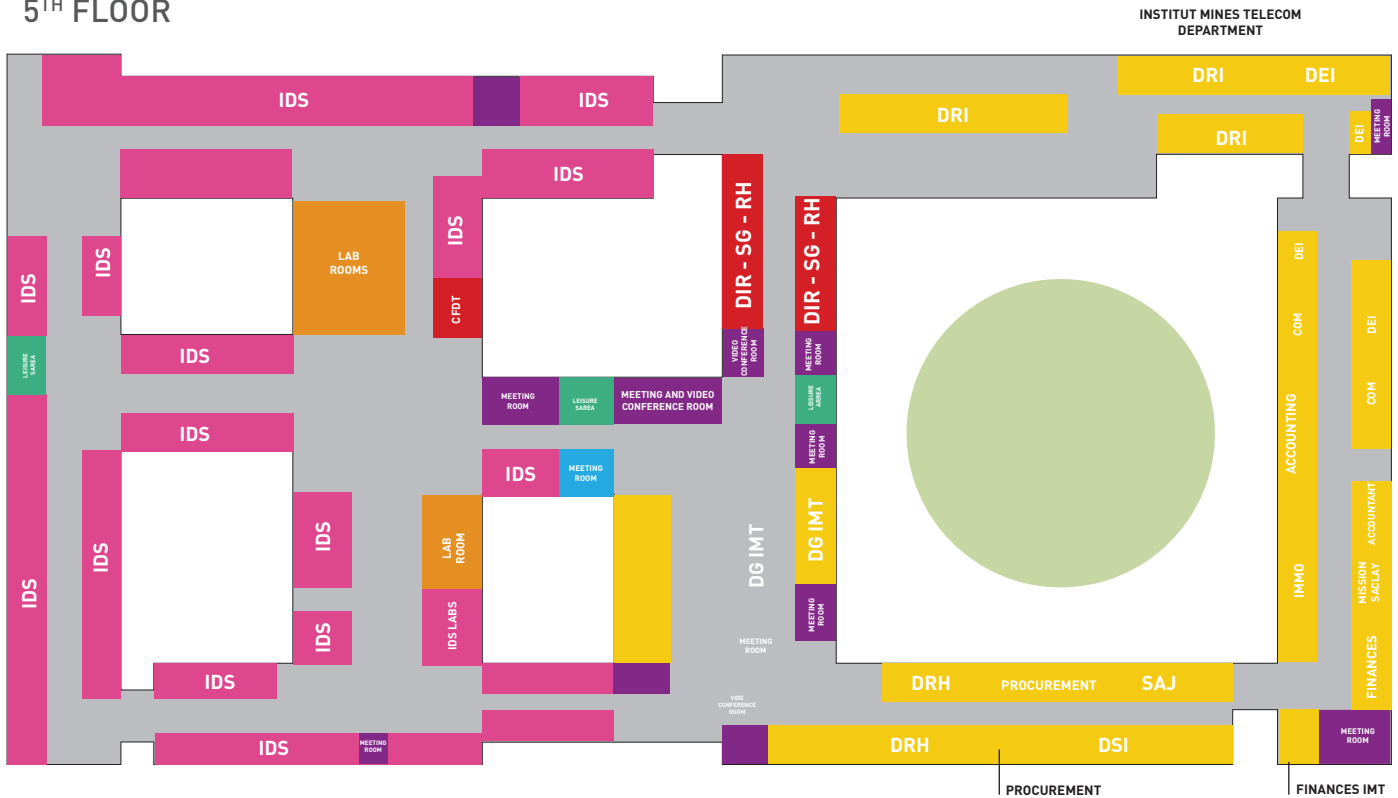
3RD FLOOR



4TH FLOOR



5TH FLOOR



STUDENTS' COMMON ROOM

For the many Télécom Paris clubs and associations, the Common Room (Le Foyer) is a space where students can meet, make life-long friends, and collaborate.

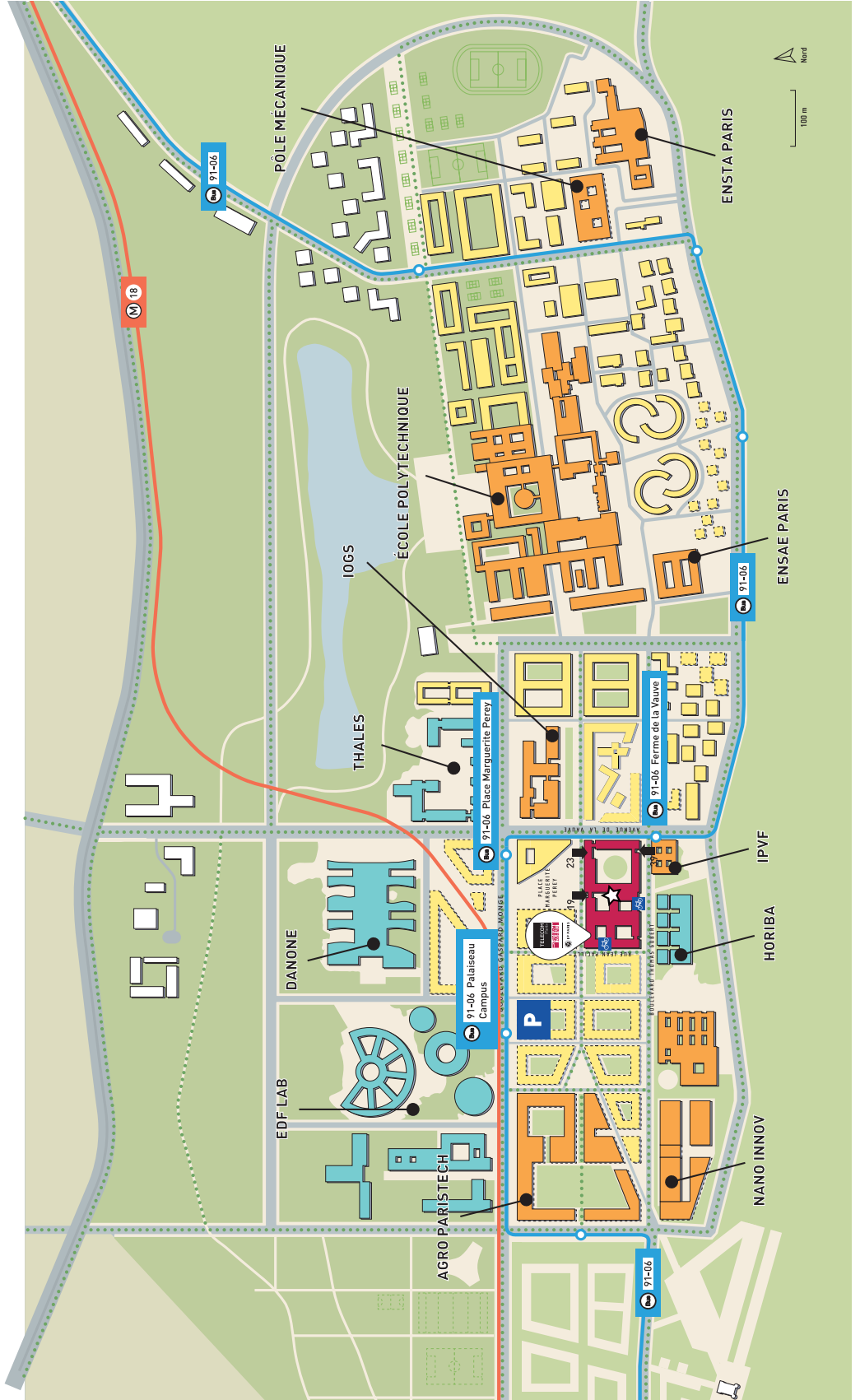
Located on the ground floor of Building A, it's here where students host various events including the popular "Rock Nights". Come hang out between or after classes, learn about the various student associations, play table football or pool, or unwind in the games library.

Below is a list of clubs and their office locations:

BDE - Students' Union	0A360
BDS - Sports Union	0A322
Comète - an audiovisual and communications club	0A345
Forum - a corporate connections club	0A318
KFT - Kebab Factory Télécom	0A358
La Scène music studio	0A362
Télécom BariTech	0A323, 0A324 et 0A326
Télécom Étude (Junior Entreprise)	0A346 et 0A348
The Robotics Club	0A320
Telecom Sound & Magic — TSM	0A347 et 0A349
Telespoir Humanitarian Outreach Club	0A343
The LudoTech game room	0A311 et 0A315



THE ÉCOLE POLYTECHNIQUE DISTRICT



CAMPUS DINING SERVICES

There are four dining facilities at your disposal.

THE WAN RESTAURANT

Collective dining services are provided by Elior. The restaurant is entirely self-service and is located on the ground floor of the A4 building. It serves up to 800 meals a day. It has 280 seats, including seven for individuals with disabilities.

Its opening hours are from 11:30am to 1:45pm.

THE WEEKY CAFETERIA

Located on the ground floor, just next to the main restaurant, this dining facility seats up to 80 people and offers pastries, hot drinks, meals, and snacks. It's open every day from 8:00am to 4:00pm non-stop.

"THE WORKO" CAFETERIA

Located near the CRDN Library on the 2nd floor of Building A, this snack lounge seats up to 12 people and is open from 8:00am to 3:00pm.

CROUS RESTAURANTS

Access to CROUS restaurants is possible after creating your account on www.izly.fr. The nearest restaurant is located in the Alexandre Manceau residence (a 3 min walk from Télécom Paris).

DINING FACILITIES AT THE INSTITUT POLYTECHNIQUE DE PARIS

ÉCOLE POLYTECHNIQUE*

Le MAGNAN is an École polytechnique restaurant located about 15 minutes on foot from our building. It is open from 11:30am to 2:00pm every day. In the main lobby, a cafeteria also offers sandwiches, paninis, salads, coffee and other snacks.

ENSTA PARIS*

The "Cœur de blé" cafeteria is open from 8:00am to 5:30pm Monday to Thursday, and until 5:00pm on Friday. You can have a quick-service breakfast or lunch including sandwiches, salads, pies, quiches, paninis, hot dishes, and desserts.

ENSAE PARIS*

Located about a 10-minute walk from our building, ENSAE Paris has a cafeteria on the ground floor of the building. It is open from 8am to 3pm.

* To date, agreements are in development within the alliance of IP Paris. While they are being finalized, the meals purchased in these restaurants are at the "external rate".

SHOPS & SERVICES

DINING

École Polytechnique District

Panifique

This bakery and artisanal pastry shop offers varieties of pastries as well as salads, wraps, burgers, and daily specials. Includes seating indoors or take away options.

Open Monday to Saturday from 7:00am to 8:00pm
13 avenue de la Vauve
91120 Palaiseau

Restaurant Universitaire CROUS

Open Monday to Friday
Restaurant: 11:30am to 2:00pm
and from 7:00pm – 9:00pm
Cafeteria: 8:00am to 6:00pm Self-service open from 10:00am to 2:30pm

22 cours Pierre Vasseur
91120 Palaiseau

Food Asia

This restaurant offers a varied menu of Asian dishes, including sushi, to eat in or take away.

Open every day from 11:30am to 10:00pm
2 boulevard Gaspard Monge
91120 Palaiseau

SHOPS

Moulon District

P.U.I.O Cafeteria (Pôle Universitaire d'Ingénierie d'Orsay)

Open Monday to Friday from 7:30am to 3:30pm
Rue Joliot Curie
91190 Gif-sur-Yvette
Bus 91.06, Université Paris-Saclay stop

Lieu de vie Restaurant (CROUS)

Open Monday to Friday
Restaurant: 11:30am to 2:00pm
Cafeteria: 8:00am to 9:30pm 13 bis rue Joliot Curie
91190 Gif-sur-Yvette
Bus 91.06, Université Paris-Saclay stop

SERVICES

CentraleSupélec Eiffel Building (CROUS)

Open Monday to Friday
Restaurant: 11:30am to 2:00pm
Cafeteria: 8:00am to 5:00pm 2 rue Noetzlin
91190 Gif-sur-Yvette
Bus 91.06, Joliot Curie stop

The Health Center

The Health Center of the Institut Polytechnique de Paris (IP Paris) caters to the needs of IP Paris staff and students. The Health Center team is available to assist you in ensuring the optimal physical, mental, and social conditions to facilitate your studies and work.

The Health Center is located at Pavillon Broca.

Your Health Center Coordinator - Ms. Elisabeth Rossi - can be reached:

- by phone at 01 69 33 39 31 or 06 69 59 99 24

- by email: pole.sante@ip-paris.fr

Health Center Opening Hours:

- Monday to Thursday: 08:30am - 12:00pm / 01:30pm - 05:00pm

- Friday: 08:30am - 12:00pm / 01:30pm - 04:15pm

DINING

SHOPS

SERVICES

Tobacco and Magazine Shop Le Saclay

This shop offers multiple services including stationery, daily newspapers and 1,000 magazine titles, tobacco, electronic cigarettes, FDJ and PMU games, candy, cards, gifts, hot coffee and cold drinks.

Open Monday to Saturday from 7:00am to 9:00pm. Closed on Sundays.

8 boulevard Gaspard Monge 91120 Palaiseau

Franprix

This supermarket offers all sorts of products needed on a daily basis. It's extremely close to the building and also has an outdoor dining area.

Open Monday to Saturday from 7:30am to 9:00pm. Closed on Sundays.

15 avenue de la Vauve
91120 Palaiseau

Moulon District

A pharmacy, bakery, tobacco shop, paper and press shop, and supermarket are available in the Moulon District, near the Serendicity Residence.

Bus 91.06, Joliot Curie stop

Camille Claudel District

Carrefour City

This supermarket is about ten minutes away by bus to Palaiseau and close to several student dorms.

Open Monday to Saturday 7:00am to 9:00pm and on Sunday from 8:00am – 1:00
2 route de Saclay
91120 Palaiseau

Bus 91.06, Camille Claudel stop

DINING

SHOPS

SERVICES

BNP Paribas bank Paris Saclay branch

The Paris Saclay branch is open for your banking and transaction needs or to meet with a financial advisor. A cash machine is also available.

Open Monday to Friday from 10:00am to 6:00pm and until 7:00pm on Thursdays.
19 avenue de la Vauve
91120 Palaiseau

Moulon District

A bank, doctor's office, optician, driving school, and hairdresser are in the Moulon District, near the Serendicity Residence.

Bus 91.06, Joliot Curie stop.

Camille Claudel District

Pharmacie des Écoles - TRAN

This pharmacy offers a wide range of pharmaceutical products as well as on-loan medical equipment. The pharmacists can also provide medical and homeopathic advice.

Open Mondays from 2:30pm to 8:00pm and Tuesday to Friday from 9:00am to 12:30pm and from 2:30pm – 8:00pm.
2 place des Causeuses
91120 Palaiseau

Bus 91.06, Camille Claudel stop

GETTING AROUND

Bike paths

Seven kilometers of bike paths are available on the Plateau de Saclay.

They allow you to travel between the École Polytechnique and the Moulon district, but also to reach other districts and surrounding towns such as the Camille Claudel district in Palaiseau, the Corbeville district, Massy, Saclay, Gif-sur-Yvette, etc.



Bus 91.06

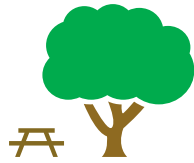
The *Transessonne* 91.06 bus line operates among the sites of ENSAE Paris, ENSTA Paris, and Polytechnique schools and provides access to Massy-Palaiseau RER B and C and the TGV station.

Buses arrive every 3 to 4 minutes during peak hours and every 10 to 15 minutes during off-peak hours.



Commuting Time:

- To get to ENSTA Paris:
- To get to ENSAE Paris:
- To get to the Moulon District:



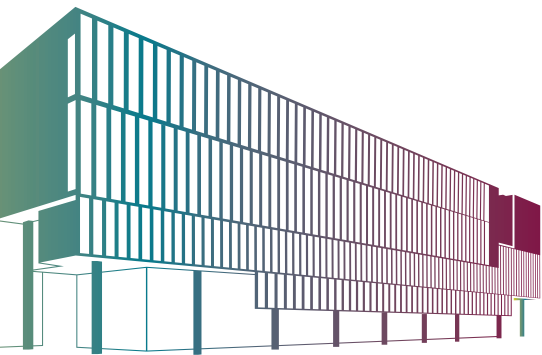
Shared electric bikes

Zoov is an electric bike service on the Plateau de Saclay.

A total of 2,000 bikes are available.

The bikes are free floating and a hundred or so charging stations have been installed.

This service costs the user €2 to unlock the bikes and use it for 20 minutes.



20 minutes on foot / 5 minutes by bus / 7 minutes by bike
10 minutes on foot / 3 minutes by bike

about 6 minutes by bus / 15 minutes by bike



On foot

All around the school, many areas are now available to promote walking and pedestrian traffic.

A fitness path connects all the schools within the Institut Polytechnique de Paris.



Practical Information

Main Location

Télécom Paris
19, place Marguerite Perey
F-91120 Palaiseau

Access (with student ID)

7:00am to 8:00pm
Monday to Friday

Other sites

Business Incubator

9 rue Dareau, 75014 Paris
Phone: 01.45.81.71.34
RER: line B - Denfert-Rochereau station
Métro: line 6 - St Jacques station
Bus: lignes 57, 67 et 83 - La Tombe Issoire stop

Station F

5 Parvis Alan Turing, 75013 Paris
Métro: line 6 - Chevaleret station
Bus: line 64 - Bibliothèque Chevaleret stop



#CHOOSETELECOMPARIS

admissions@telecom-paris.fr